



TCL PORTABLE AIR CON

Air-conditioning Anywhere Anytime

20000BTU
18000BTU



www.tcl.sg

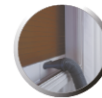
MODEL	TAC-20CPA/ DMG	TAC-18CPA/ DMG
COOLING	20000BTU/H	18000BTU/H
COOLING	5800W	5300W
VOL, FRE, PH	220-240V, 50Hz	220-240V, 50Hz
INPUT POWER	2180W	2290W
AIR FLOW VOLUME	450M ³ /H	450M ³ /H
REFRIGERANT	R410A	R410A
LOWEST TEMPERATURE	18°C	18°C
NOISE LEVEL	58dB(A)	58dB(A)
TIMER	24HRS	24HRS
RECOMMENDED AREA	24-38SQM	22-35SQM
NET DIMENSION	365W x 775H x 568D	365W x 775H x 568D
NET WEIGHT	47KG	42KG



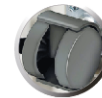
Powerful Cooling Function



24 Hour Timer



Easy Window Connection



Durable Casters



Direct-wash Filter



Remote Control



Smart Touch Panel

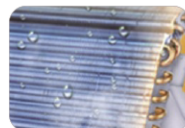


3-in-1 Cooling / Dehumidifying / Fanning

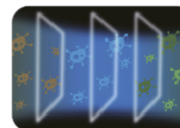


Automatic Evaporation No Drainage Needed

NEW TITANGOLD TECHNOLOGY



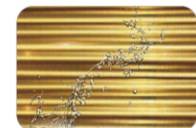
Self Cleaning



Bacteria Purifying



Fast Cooling



Longer Durability

Specification is correct at time of print and subject to change for better performance. Also available from 10000BTU onwards.

(2210)